

Miele

Dishwasher and Laundry Appliances Price List, Australia.

Effective 01.10.2023



Buy Once. Buy Better.

Elevate your home with quality that's forever better.
That's Miele. That's Immer Besser.

**20
YEARS**

German engineered and
tested to the equivalent of
20 years' average usage.*

Terms and Conditions apply. Visit miele.com.au/quality

** During development phase of the displayed product series washing machine series W1, dryer series T1, washer-dryer series WT1 and product series dishwashers G 5000 and G 7000, Miele has tested the functionality of core components in durability tests to simulate 20 years' average use within an average household. Individual products are likely to require servicing from time to time and may require replacement of core components to maintain them in a serviceable condition. For more information visit: Miele.com.au/quality or scan the QR code.



Scan the QR code
for more information

Quality Ahead of its Time

Your needs are the DNA of our appliances.

In order to create long-lasting reliability, we combine constant innovation with expert craftsmanship – the meticulous devotion to detail that makes sure, our machines are built to last and to answer your every need.

That's why our appliances are designed to work intuitively together, to make every task seamless and effortless. Whether it's laundry, dishwashing, refrigeration, kitchen appliances or floor care, everything we do is to improve your household experience.

Longevity is The Ultimate Sustainability

SUSTAINABILITY

Imagine, instead of using many appliances over the years – just using one. One that uses less water, less energy. So you consume less.

CRAFTSMANSHIP

Since 1899, we've never been satisfied with the best. For us, every ground-breaking innovation is more than a cause for celebration. It is a challenge to create something even better. That's why we craft our own parts, forge our own iron. Even make the machines that make the machines. We call it: Immer besser.

PERFORMANCE

Whilst some car engines are tested for 3,000 hours, we check our performance with up to 10,000.¹ Day and night. Comprehensive and precise. That's why you can completely rely on our products.



¹ We test up to 10,000 hours: During the development phase of washing machines series W1 Miele and dryer series T1 has tested models and core components for 10,000 hours.

Miele

Miele Washing Machines and Dryers are Tested to the Equivalent of 20 Years' Average Usage.**

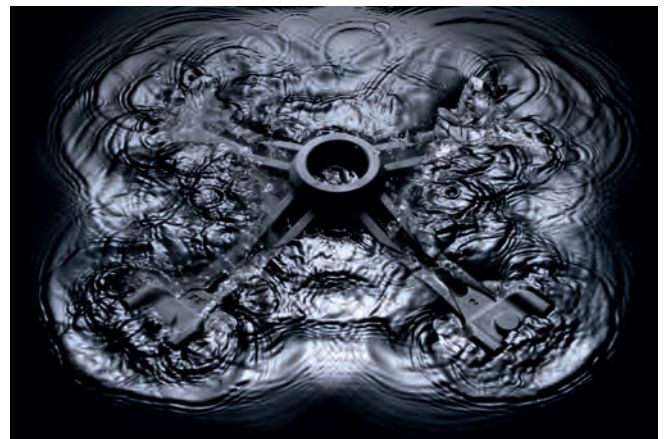
Miele washing machines are designed for long-lasting performance. So you can get the perfect clean for your favourite clothes, year after year.



A washing machine should be seen, not heard. That's why we test every appliance not only for a long service life and a hygienic, sustainable performance but also for very low noise levels.



30% of our development time goes into testing. To guarantee outstanding results, for years to come.



** During development phase of the displayed product series washing machine series W1, dryer series T1 and washer-dryer series WT1, Miele has tested the functionality of core components in durability tests to simulate 20 years' average use within an average household. Individual products are likely to require servicing from time to time and may require replacement of core components to maintain them in a serviceable condition. For more information visit: [Miele.com.au/quality](https://miele.com.au/quality) or scan the QR code.

**20
YEARS**

German engineered and tested to the equivalent of 20 years' average usage.
Terms and Conditions apply. Visit miele.com.au/quality



Scan the QR code for more information

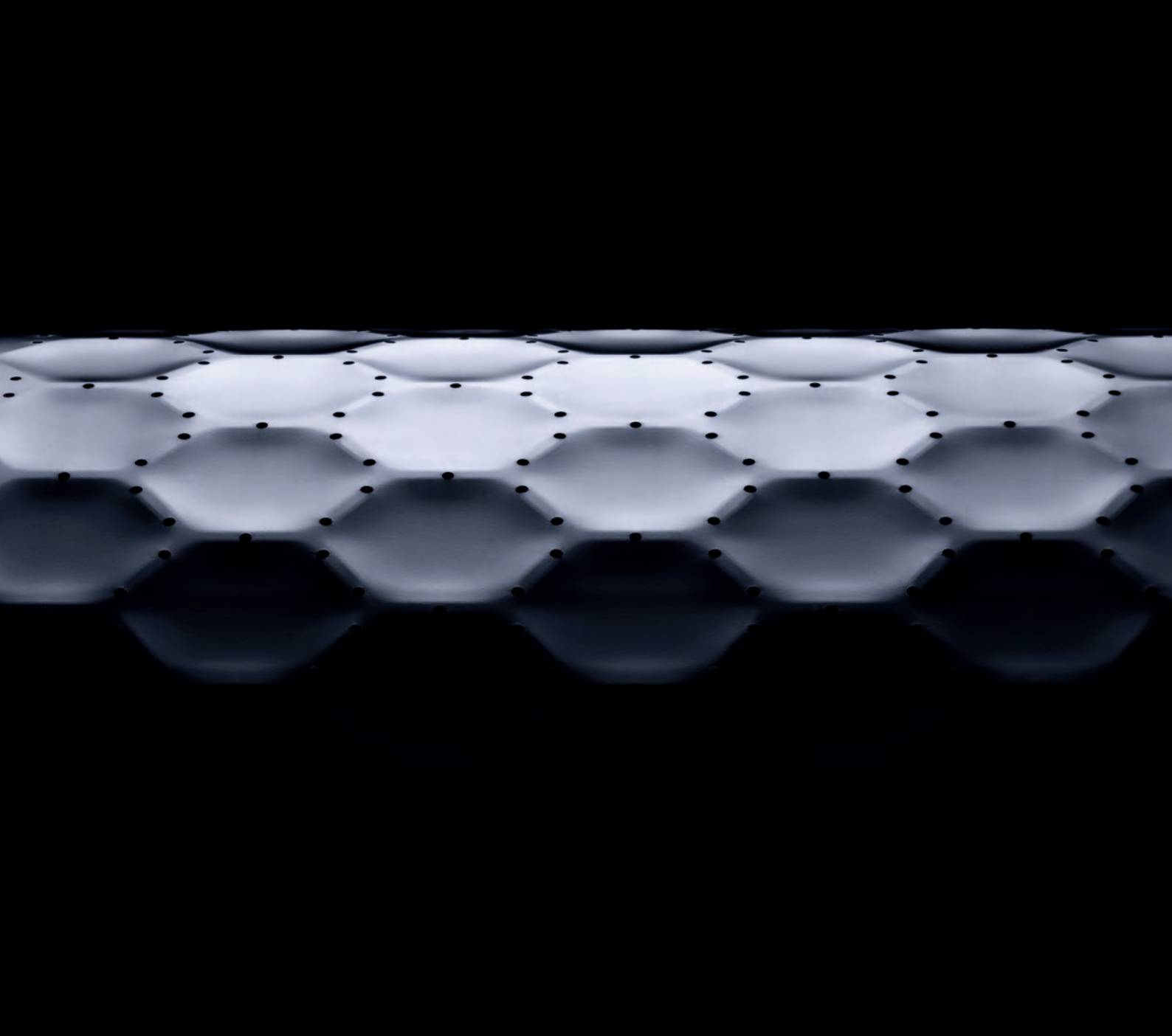
Miele Quality Means Forever Better



Thanks to our quality components and rigorous testing, you can enjoy the best possible product, for the longest time possible.

Washing machines: 10-year quality assurance against the breakdown of the drum, outer tub, axle and bearings, brushless motor, and a lifetime quality assurance on the door hinges.

Tumble dryers: 10-year quality assurance against the breakdown of the stainless steel drum, motor and lifters. Includes quality assurance against corrosion.



Miele

Our 30 Day Money Back Guarantee is Your Assurance of Quality

We are so confident in the quality and performance of our laundry appliances, you can purchase yours risk free. Our Money Back Guarantee applies to the Miele range of washing machines and tumble dryers with the 30-day period taking effect from time of delivery.



Save \$200 when any Miele Washing Machine and Dryer are Bought as a Package

Customers have up to 90 days from date of purchase of their washing machine to purchase the matching tumble dryer at the package price saving. Saving applies to tumble dryer model purchased. Non-matching Miele washing machine and tumble dryer packages can be purchased.

Better Results with Miele Washing Machines

Easy to load and operate, Miele front-loading washing machines can be positioned in almost any space and with features such as TwinDos – the most efficient liquid detergent dispensing system on the market - you'll experience worry-free washing for many years to come.

All Washing Machines - Standard DNA



Miele Quality

Miele washing machines are tested to the equivalent of 20 years' average usage.¹



Honeycomb Drum

Gentle laundry care - Never hand wash again.



Miele Made Electronics

Quality, serviceability and peace of mind.



4 Suspension Springs and 3 Shock Absorbers

For balance and minimised operational noise.



ProfiEco Motor

Long-lasting, powerful, efficient, maintenance-free and quiet for your convenience.



Stainless Steel Drum Flange

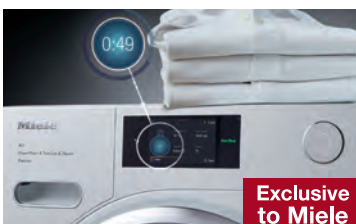
For ultimate durability and hygiene.

Washing Machine Highlights*



TwinDos

Independently tested as the best liquid detergent on the market.²



QuickPowerWash

Outstanding wash results in 49 minutes, up to 4 kgs.



SingleWash

Wash single garments and loads up to 1 kg quickly and efficiently.



Pre-ironing

Reduce your ironing by up to 50%.



Dedicated Delicate Programmes

Even the most delicate items are treated with care, eliminating the need for hand washing.



WiFi Conn@ct

Operate your appliance remotely and access assistant functions via the Miele App.

²Tested by the Hohenstein Institute. Test no. HL 13.2.10991. *Features may vary between models.

¹During development phase of the displayed washing machine series W1, Miele tested the functionality of core components under controlled laboratory settings with 5,000 wash cycles using varying wash programs which simulate 20 years' average use within an average household. Individual products are likely to require servicing from time to time and may require replacement of core components to maintain them in a serviceable condition. For more information visit: Miele.com.au/quality or scan the QR code.



Scan the QR code for more information

Total Care with Miele Tumble Dryers

Miele offers a variety of drying systems for you to choose from. All are designed to deliver perfect drying results with the greatest of care while making life at home a great deal easier.

All Tumble Dryers - Standard DNA



Miele Quality

Miele tumble dryers are tested to the equivalent of 20 years' average usage.¹



PerfectDry

Precise drying thanks to mineral sensors.



EcoDry

Low energy consumption and short drying times through the entire life of the dryer.



Heat Pump Technology

Low temperature, energy efficient and gentle drying.



Honeycomb Drum

For gentle garment care.



Miele Made Electronics

Quality, serviceability and peace of mind.

Tumble Dryer Highlights*



10 Star Energy Rating

Miele has the largest range of 10 star energy rated heat pump dryers in Australia.



Pre-ironing

Reduce your ironing by up to 50%.



FragranceDos²

Fragrant laundry with a choice of two scents at any given time.



Door hinge on either side

Choose which way you want your door to open.



LED Drum Lighting

Perfect illumination of the Honeycomb drum.



WiFi Conn@ct

Operate your appliance remotely and access assistant functions via the Miele App.

*Features may vary between models. ²Compared to a Miele tumble dryer without EcoSpeed with the same load size and energy efficiency rating. Tested in Cottons programme with full load.

¹During development phase of the displayed dryer series T1, Miele tested the functionality of core components under controlled laboratory settings with 5,000 drying cycles using varying programs which simulate 20 years' average use within an average household. Individual products are likely to require servicing from time to time and may require replacement of core components to maintain them in a serviceable condition. For more information visit: Miele.com.au/quality or scan the QR code.



Scan the QR code for more information

TwinDos®* Automatic Detergent Dispensing – The Innovation for Perfect Results



Achieve perfect results every time: thanks to the innovative TwinDos®* dispensing system, the integrated UltraPhase 1 and 2 detergent is dispensed automatically allowing you to save up to 30% on detergent compared to manual dispensing.

UltraPhase 1 guarantees perfect cleanliness and brilliant results on colours and white laundry. With UltraPhase 2, bleaching agent is added at the ideal moment to ensure that even stubborn stains are removed completely.



The German Hohenstein test institute tested the characteristics of the automatic 2-phase dispensing system in connection with Miele's UltraPhase 1 and UltraPhase 2 detergents. They confirmed excellent wash results in terms of stain removal, the degree of whiteness, the anti-greying effect and accuracy of dispensing.



Miele's 2-phase system produces a cleaner and more thorough washing result than conventional liquid detergents that do not contain bleaching agents, as these would destroy the other ingredients. UltraPhase 1 and 2 are stored and dispensed separately, which makes it possible to add bleaching agent to the TwinDos® system.

Active ingredients in UltraPhase 1 dissolve the dirt and remove stains such as oil, grease, protein and starch. With UltraPhase 2, bleaching agent is added at the appropriate time during the wash process and removes even stubborn stains such as coffee, tea, fruit juice or red wine. Experience Miele's chemistry laboratory & the cleaning performance of UltraPhase 1 and UltraPhase 2 at miele.com.au (Products – Miele Cleaning Products).

To protect delicate skin, we now offer a Sensitive UltraPhase 1 and 2 detergent version: it is completely free of colorants and fragrances. By using sensitive detergents, you give your skin time to recuperate and keep allergies at bay. And your laundry? Perfectly cleaned and cared for – you can rely on that too.

Working in Perfect Harmony for More Sustainability








Economical washing in any situation: the perfect interaction between the TwinDos® automatic dispensing system and the excellent cleaning performance of PowerWash ensures maximum efficiency when washing. Individual items of laundry can also be washed economically – thanks to the practical SingleWash extra. This enables savings of up to 40% for detergent** and up to 60% in terms of energy and time^ with every use.



*Patent: EP 2 784 205 **Compared with automatic dispensing without SingleWash ^In the "Minimum iron 40 °C" programme compared with Miele washing machines without PowerWash and SingleWash

Washing Machine Specifications

Highlight indicates a differentiation from previous model.







	WCA 020	WWD 120	WWD 164	WWD 320	WWD 660
					
Price	\$1,549	\$2,049	\$2,299	\$2,299	\$2,299
Item Number	11636040	11407230	12144850	11407240	11621240
Load Capacity	7 kg	8 kg	9 kg	8 kg	8 kg
Door Design	White / Black	White / Black	White / Black	White / Black	White / Black
Display	EasyControl Yellow /7-segment	7 segment DirectSensor Yellow	7 segment DirectSensor Yellow	7 segment DirectSensor Yellow	7 segment DirectSensor Yellow
Fascia	Straight	5° angle	5° angle	5° angle	5° angle
Installation: Built-under	YES	-	-	-	-
Built-under kit	UBS W1/G	-	-	-	-
Miele Washer DNA	YES	YES	YES	YES	YES
Water Connection	Cold Connection	Cold Connection	Cold Connection	Cold Connection	Cold Connection
Water Protection System	WCS ⁴	WCS ⁴	WCS ⁴	WCS ⁴	WCS ⁴
Wash Programmes	12	12	12	12	12
Spin Speed	1400rpm	1400rpm	1400rpm	1400rpm	1400rpm
Cap Dosing	YES	YES	YES	YES	YES
TwinDos automatic detergent dispensing	-	-	-	-	YES
QuickPowerWash Programme (4 kg)	-	-	-	YES	-
SingleWash	-	-	-	-	-
Stains	-	-	-	-	-
Soak Option	-	-	-	-	-
Extra Quiet Option	-	-	-	-	-
Honeycomb Drum	YES	YES	YES	YES	YES
SteamCare	-	-	-	-	-
AddLoad	YES	YES	YES	YES	YES
Pre-ironing	-	YES	YES	YES	YES
24 h Delay Start	YES	YES	YES	YES	YES
LED Drum Lighting	-	-	-	-	-
Choice of language (MultiLingua)	-	-	-	-	-
Energy/WELS Star Rating Test Programme	4.0 / 4.0 Eco 40-60	4.5 / 4.5 Cottons<40°C	4.5 / 4.5 Eco 40-60	4.5 / 4.5 Cottons<40°C	4.5 / 4.5 Eco 40-60
WELS Registration Number	C01942	C01784	C02179	C01823	C01917
Water l/wash	68	63	76	67	63
ECOFeedback	-	-	-	-	-
WiFi Conn@ct & MobileControl	-	-	YES	-	YES
Complimentary UltraPhase 1 and 2	-	-	-	-	YES
CapDos Sample	-	-	-	-	-
Voucher for 6 month supply of UltraPhase	-	-	-	-	YES

Matching Tumble Dryers



Washing Machine Specifications

Highlight indicates a differentiation from previous model.

	WWH 860	WWG 360	WWG 660	WWI 860	WWR 860 WPS	WWV 980 WPS
						
Price	\$2,999	\$2,799	\$2,799	\$3,199	\$4,299	\$5,349
Item Number	11902450	11407310	11407330	11407370	11420470	11006000
Load Capacity	8 kg	9 kg	9 kg	9 kg	9 kg	9 kg
Door Design	Chrome / Black	Chrome / Black	Chrome / Black	Chrome / Black	Chrome / White	Chrome / Alu Silver
Display	ComfortSensor / 1-line, White	1 line DirectSensor White	1 line DirectSensor White	1 line DirectSensor White	M Touch	M Touch
Fascia	5° angle	5° angle	5° angle	5° angle	5° angle	5° angle
Installation: Built-under	-	-	-	-	-	-
Built-under kit	-	-	-	-	-	-
Miele Washer DNA	YES	YES	YES	YES	YES	YES
Water Connection	Hot and Cold Connect	Cold Connection	Cold Connection	Hot and Cold Connection	Hot and Cold Connection	Hot and Cold Connection
Water Protection System	WCS ⁴	WCS ⁴	WCS ⁴	WCS ⁴	WPS ⁵	WPS ⁵
Wash Programmes	12	17	16	22	26	28
Spin Speed	1400rpm	1400rpm	1400rpm	1600rpm	1600rpm	1600rpm
Cap Dosing	YES	YES	YES	YES	YES	YES
TwinDos automatic detergent dispensing	YES	-	YES	YES	YES	YES
QuickPowerWash Programme (4 kg)	YES	YES	-	YES	YES	YES
SingleWash	YES	YES	-	YES	YES	YES
Stains	YES	-	-	YES	YES	YES
Soak Option	YES	YES	YES	YES	YES	YES
Extra Quiet Option	YES	YES	YES	YES	YES	YES
Honeycomb Drum	YES	YES	YES	YES	YES	YES
SteamCare	-	-	-	-	-	YES
AddLoad	YES	YES	YES	YES	YES	YES
Pre-ironing	YES	YES	YES	YES	YES	YES
24 h Delay Start	YES	YES	YES	YES	YES	YES
LED Drum Lighting	-	-	-	-	YES	YES
Choice of language (MultiLingua)	YES	YES	YES	YES	YES	YES
Energy/WELS Star Rating Test Programme	4.5 / 4.5 ECO 40-60	4.5 / 4.5 Cottons 40°C	4.5 / 4.5 Cottons 40°C	4.5 / 4.5 Cottons 40°C	5.0 / 5.0 Cottons 40°C	5.0 / 5.0 Cottons 40°C
WELS Registration Number	C02037	C01825	C01820	C01821	C01765	C01667
Water l/wash	67	76	76	76	64	64
ECOFeedback	-	-	-	YES	YES	YES
WiFi Conn@ct & MobileControl	YES	YES	YES	YES	YES	YES
Complimentary UltraPhase 1 and 2	YES	-	YES	YES	YES	YES
Voucher for 6 month supply of UltraPhase	YES	-	YES	YES	YES	YES
CapDos Sample	YES	YES	YES	YES	YES	YES

Matching Tumble Dryers

TWF 720 WP / TWH 780 WP



TWH 780 WPS



TWL 780 WP



TWR 780 WP








TWV 780 WP



Tumble Dryer Specifications

Highlight indicates a differentiation from previous model.

	TEA 235 WP	TCB 140 WP	TWC 220 WP	TWD 660 WP	TWD 364 WP
					
Price	\$1,799	\$1,899	\$2,299	\$2,399	\$2,499
Item Number	11905870	11420330	11905880	11621390	12210550
Load Capacity	7 kg	7 kg	8 kg	8 kg	9 kg
Door Design	White solid door, straight front	White solid door, straight front	White solid door, curved front	Black / White	White / Black
Display	EasyControl yellow / 7-segment	7 segment DirectSensor Yellow	7 segment DirectSensor Yellow	7 segment DirectSensor Yellow	7 segment DirectSensor Yellow
Fascia	Slanted	Straight	5° angle	5° angle	5° angle
Fascia graphic	T1 Excellence Active	T1	T1 8 kg	T1 EcoSpeed & 8 kg ModernLife	T1 9 kg XL Performance
SilenceDrum	-	-	-	-	-
Installation: Built-under	-	YES	-	-	-
Reversible door hinge	-	-	YES	YES	YES
Stacking Kit for matching machine	WTV 502	WTV 502	WTV 502	WTV 502	WTV 502
Stacking Kit for matching machine with pull out storage drawer	WTV 511	WTV 511	WTV 512	WTV 512	WTV 512
Miele Dryer DNA	YES	YES	YES	YES	YES
ProfiEco Motor	-	-	YES	YES	YES
Drying Programmes	12	12	12	12	12
Wash2Dry	-	-	-	YES	YES
DryCare 40	-	-	-	-	-
HygieneDry	-	-	-	-	-
SteamFinish / PowerFresh	- / -	- / -	- / -	- / -	- / -
DryFresh	-	-	-	-	-
AddLoad	YES	-	YES	YES	YES
Pre-ironing	YES	YES	YES	YES	YES
Delay Start	YES	YES	YES	YES	YES
Freshen Up Option	-	-	-	-	-
Bed Linen Programme	YES	YES	-	YES	YES
FragranceDos / FragranceDos²	YES / -	YES / -	YES / -	YES / -	YES / -
Energy Star Rating	8	9	9	9	9
EcoFeedback	-	-	-	-	-
ECO Option	-	-	-	-	-
WiFi Conn@ct	-	-	-	YES	YES
1x Aqua Fragrance Flacon	YES	YES	YES	YES	YES
Drying Basket (TRK 555)	-	-	-	-	-

Matching Washing Machines



Tumble Dryer Specifications

Highlight indicates a differentiation from previous model.

TWF 720 WP



TWH 780 WP



TWL 780 WP



TWR 780 WP



TWV 780 WP



	TWF 720 WP	TWH 780 WP	TWL 780 WP	TWR 780 WP	TWV 780 WP
Price	\$2,999	\$3,199	\$3,999	\$4,999	\$5,399
Item Number	11493720	11905900	11905910	11905920	11905930
Load Capacity	8 kg	9 kg	9 kg	9 kg	9 kg
Door Design	Chrome / Black	Chrome, inner ring Black	Chrome, inner ring Black	Outer ring high-gloss chrome, inner ring White	Outer ring high-gloss chrome, inner ring Silver
Display	7 segment DirectSensor White	7 segment DirectSensor White	1 line ComfortSensor White	M Touch	M Touch
Fascia	5° angle	5° angle	5° angle	5° angle	5° angle
Fascia graphic	T1 Eco & 8 kg	T1 EcoSpeed & 9 kg	T1 EcoSpeed & 9 kg	T1 EcoSpeed & Steam & 9 kg	T1 Eco & Steam & 9 kg Passion
SilenceDrum	-	YES	YES	YES	YES
Installation: Built-under	-	-	-	-	-
Reversible door hinge	YES	YES	YES	YES	YES
Stacking Kit for matching machine	WTV 502	WTV 502	WTV 502	WTV 502	WTV 502
Stacking Kit for matching machine with pull out storage drawer	WTV 512	WTV 512	WTV 512	WTV 512	WTV 512
Miele Dryer DNA	YES	YES	YES	YES	YES
ProfiEco Motor	YES	YES	YES	YES	YES
Drying Programmes	12	12	22	22	23
Wash2Dry	-	YES	YES	YES	YES
DryCare 40	-	YES	YES	YES	YES
HygieneDry	-	YES	YES	YES	YES
SteamFinish / PowerFresh	- / -	- / -	YES / YES	YES / YES	YES / YES
DryFresh	-	YES	YES	YES	YES
AddLoad	YES	YES	YES	YES	YES
Pre-ironing	YES	YES	YES	YES	YES
Delay Start	YES	YES	YES	YES	YES
Freshen Up Option	-	-	-	YES	YES
Bed Linen Programme	YES	YES	YES	YES	YES
FragranceDos / FragranceDos²	- / YES	- / YES	- / YES	- / YES	- / YES
Energy Star Rating	10	10	10	10	10
EcoFeedback	-	YES	YES	YES	YES
ECO Option	-	-	-	-	YES
WiFi Conn@ct	-	YES	YES	YES	YES
1x Aqua Fragrance Flacon	YES	YES	YES	YES	YES
Drying Basket (TRK 555)	-	-	-	-	YES

Matching Washing Machines

WWH 860



WWG 360 / WWG 660



WWI 860



WWR 860 WPS



WWV 980 WPS



Package Prices - **Save \$200** when any Miele washing machine and dryer are bought as a package.**

Package 1



WCA 020 + TCB 140 WP
Save \$200
Now \$3,248

Package 2



WWD 120 + TWC 220 WP
Save \$200
Now \$4,148

Package 3



WWD 660 + TWD 660 WP
Save \$200
Now \$4,498

Package 4



WWD 320 + TWD 660 WP
Save \$200
Now \$4,498

Package 5



WWD 164 + TWD 364 WP
Save \$200
Now \$4,598

Package 6



WWG 360 + TWF 720 WP
Save \$200
Now \$5,598

Package 7



WWG 660 + TWF 720 WP
Save \$200
Now \$5,598

Package 8



WWG 360 + TWH 780
Save \$200
Now \$5,798

Package 9



WWG 660 + TWH 780
Save \$200
Now \$5,798

Package 10



WWH 860 + TWF 720 WP
Save \$200
Now \$5,798

Package 11



WWH 860 + TWH 780 WP
Save \$200
Now \$5,998

Package 12



WWI 860 + TWL 780 WP
Save \$200
Now \$6,998

Package 13



WWR 860 + TWR 780 WP
Save \$200
Now \$9,098

Package 14



WWV 980 + TWV 780 WP
Save \$200
Now \$10,548

**Effective from 1 June 2023. Customers have up to 90 days from date of purchase of their washing machine to purchase the matching tumble dryer at the package price saving. Saving applies to tumble dryer model purchased. Non-matching Miele washing machine and tumble dryer packages can be purchased.

Experience The Best of Both Worlds with Miele Washer Dryers

Miele washer dryers can be positioned in almost any space and with features such as TwinDos – the most efficient liquid detergent dispensing system on the market - you'll experience worry-free washing for many years to come and perfect drying results with the greatest of care while making life at home a great deal easier.

Washer Dryers - Standard DNA



Miele Quality

Miele carries out intensive endurance tests to meet the highest quality standards.¹



Honeycomb Drum

Gentle laundry care - Never hand wash again.



Miele Made Electronics

Quality, serviceability and peace of mind.



4 Suspension Springs & 3 Shock Absorbers

For balance and minimised operational noise.



ProfiEco Motor

Long-lasting, powerful, efficient, maintenance-free and quiet for your convenience.



Stainless Steel Drum Flange

For ultimate durability and hygiene.

Washer Dryer Highlights*



TwinDos

Independently tested as the best liquid detergent on the market².



QuickPower Wash & Dry Programmes

Choose to wash, dry or combine the two to achieve perfect results in the shortest time for up to 4 kg.



SingleWash & Dry

Wash and dry single garments and loads up to 1 kg quickly and efficiently.



CapDosing

Use Miele's portioned capsules for more delicate items, such as down and silk.



Dedicated Delicate Programmes

Even the most delicate items are treated with care, eliminating the need for hand washing.



SteamCare

50% less ironing required.

²Tested by the Hohenstein Institute. Test no. HL 13.2.10991. *Features may vary between models.

¹During development phase of the displayed Washer Dryer series WT1, Miele tested the functionality of core components under controlled laboratory settings with 5,000 washing and 4000 drying cycles using varying programs which simulate 20 years' average use within an average household. Individual products are likely to require servicing from time to time and may require replacement of core components to maintain them in a serviceable condition. More: Miele.com.au/quality or scan the QR code.



Scan the QR code for more information

Washer Dryer Specifications

Highlight indicates a differentiation from previous model.

WTD 160 WCS



WTR 870 WPM



WTW 870 WPM



	\$3,199	\$4,299	\$4,849
Price	\$3,199	\$4,299	\$4,849
Item Number	11679820	11679830	11679840
Load Capacity / Drum Volume	8 kg Washing / 4 kg Drying 59 l	8 kg Washing / 4 kg Drying 59 l	9 kg Washing / 5 kg Drying 64 l
Installation: Built under (82 cm) / Slot-in / Stackable	YES / YES / YES	- / YES / YES	- / - / -
Appliance / Door Colour	Lotus White / Graphite Grey PearlFinish	Lotus White / Chrome	Lotus White / Chrome
Fascia Incline	Straight	Slanted	Slanted
Display	DirectSensor White	M Touch	M Touch
Stainless Steel Suds Container	YES	YES	YES
ProfiEco Motor	YES	YES	YES
Water Protection System	WCS	WPM	WPM
Wash Programmes	11	29	29
Drying Programmes	8	21	21
Spin Speed	1500rpm	1600rpm	1600rpm
CapDosing	-	YES	YES
Single Wash&Dry	-	YES	YES
QuickPower (4 kg capacity)	-	Wash (49 min) / Dry ⁴ / Wash&Dry (2h 59 min)	Wash (49 min) / Dry ⁴ / Wash&Dry (2h 59 min)
TwinDos automatic detergent dispensing	-	YES	YES
Honeycomb Drum	YES	YES	YES
SteamCare / Anti-crease	- / YES	YES / YES	YES / YES
AddLoad (Washing ONLY)	YES	YES	YES
24 hr Delay Start / Countdown Indicator / Buzzer	YES / YES / -	YES / YES / YES	YES / YES / YES
Time of day display / LED Drum Lighting	- / -	YES / YES	YES / YES
Load indicator (3D Sensor)	-	-	YES
WashDry Assistant	-	YES	YES
PerfectCare Technology	YES	YES	YES
Energy Star Rating - Washing / Energy Star Rating - Drying	4.5 / 4.0	4.5 / 4.5	5.0 / 4.5
WELS Star Rating	4.5	4.5	4.5
WELS Registration Number	C02014	C02013	C02018
Test Programme	Eco 40-60 Programme	Eco 40-60 Programme	Eco 40-60 Programme
Water Consumption in l/Wash Additional water used for drying	67 21	67 21	76 25
Dryer Type	Condenser	Condenser	Condenser
WiFi Conn@ct / MobileControl / SmartStart	YES / YES / YES	YES / YES / YES	YES / YES / YES
Smart App Assist Feature	YES	YES	YES
Complimentary UltraPhase 1 and 2	-	YES	YES
Voucher for 6 month supply of UltraPhase	-	YES	YES

⁴QuickPower Dry programme can follow any wash programme, therefore the timing will vary depending on residual moisture content of load.

Miele FashionMaster: All-In-One Ironing System for all Types of Fabric

FashionMaster Performance



Honeycomb soleplate

Best ironing results combined with perfect fabric care through the uniform distribution of steam.



Up to 4 bar Steam Pressure

Guarantees ironing results to professional standards.



Non-stick soleplate

Avoids glossy patches on fabrics. Gentle ironing of sequined and sensitive fabrics.

FashionMaster Convenience



1-2 lift system

Simple: Two steps, zero effort. Ready to use in seconds and pack down is just as effortless. Easy to manoeuvre thanks to the castor wheels.

Infinitely variable height adjustment

Ergonomic ironing system, can be perfectly adjusted to the desired working height.



Suction function

Garments are automatically secured in place, preventing them from slipping.



Automatic rinsing

Mineral residue left behind from the evaporation process is removed easily and conveniently, ensuring consistent performance and longevity.

FashionMaster Peace of Mind & Safety



Steamer

Gentle and effective smoothing of hanging textiles (e.g. dresses, jackets, curtains).



Inflation function

The air cushioning effect prevents steam and hem impressions.



CoolDown

Iron switches off after 3 minutes when not in use and will switch back on when moved again.



AutoOff function

Iron and steamer automatically switch off when the appliances is no longer in use (approx. 25 mins.)

B 4847¹ FashionMaster Specifications



Price	\$2,949
Item Number	11977970
Dimensions (folded W x H x D)	970 mm x 470 mm x 1480 mm
Dimensions in use (W x H x D)	470 mm x 970 mm x 1480 mm
Iron surface area	1200 mm x 400 mm
Iron colour	Anthracite/Lotus white
Ironing board cover colour² & material	Tayberry red 100% cotton
Iron rest & contour lid design²	YES
Frame colour²	Painted Aluminium
Display	1-line text display
Honeycomb soleplate	YES
Steam pressure	4 bar
Steam output	100 g/min
Vertical steam	YES
Burst of steam	YES
Continuous steam	YES
Active ironing board (inflation and suction functions)	YES
2-stage fan	YES
Water container volume	1.25 l
Removable water container	YES
Refillable water container	YES
Multi-layer ironing	YES
1-2 lift system	YES
Infinitely variable height adjustment range	830 – 1020 mm
Floor-friendly rollers	YES
Ironing board with Comfort Zone	YES
Fan auto switch on/auto switch off	YES
Automatic rinsing and descaling	YES
Storage compartment for iron, connection cable and accessories	YES
CoolDown function	YES
Auto Off function	YES
Non-stick soleplate	YES
Steamer	YES
Descaling tablets	YES

Washing Machine and Tumble Dryer Accessories

Accessories



UBS W1/G 09709940
Built-under kit. Suits WCA, WCD and WCG washing machine models.
\$105



UBS T1/G 09710050
Built-under kit. Suits TCB, TCD tumble dryer models.
\$105



UP1 cartridge 10223070
Empty cartridge for TwinDos washing machines.
\$40.40

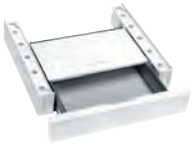


UP2 cartridge 10223120
Empty cartridge for TwinDos washing machines.
\$40.40

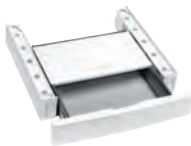


TRK 555 09614800
Dryer basket for T1 series tumble dryers.
\$105

Stacking Kits and Plinths



WTV 511 09351780
12 cm stacking kit with drawer.
\$245



WTV 512 09351790
12 cm stacking kit with drawer.
\$245



WTV 501 009256130
Slim kit (2.5 cm). Suits models as per table below.
\$105



WTV 502 09256140
Slim kit (2.5 cm). Suits models as per table below.
\$105



WTV 412 06667550
Without drawer. Suits models as per table below.
\$105

Stacking Kit Compatibility Chart

Washing Machines	Tumble Dryers		
	T1 Series TWB 140 / TWD 440 / TWF 720 TWJ 660 / TWR 860 / TMV 840 TMR 840 / TWV 680 / TWD 660 TWC 220 TWH 780 / TWL 780 TWR 780 / TWV 780 / TWD 364	T1 and T1 Classic TDB 130 / TDD 130 TCE 630 / TCJ 690 TCR 870 / TCB 140 TCD 660 / TEA 235	T Classic TDA 150 C
W1 Series WMV 960 / WMR 861 WWV 980	WTV 502 WTV 512	WTV 501 WTV 511	WTV 412
W1 and W1 Classic WWD 120/WWD 320 WWG 360 / WWG 660 WWI 860 / WWR 860 WCE 330 / WCE 670 WCI 670 / WDB 030 WDD 030 / WCR 870 WCR 890 / WCA 020 WWD 660 / WCD 660 WWH 860 / WWD 164	WTV 502 WTV 512	WTV 501 WTV 511	WTV 412

Plinth Set for Washing Machines and Tumble Dryers



WTS 510 99500681
Laundry plinth with integrated drawer, twin set. Suits all Miele washing machines and tumble dryers. The plinths can only be installed as a side by side configuration, with laundry models secured directly to the plinths. This model is not suitable for singular installation, stacked appliances, or single washer-dryer models. Miele plinths are suitable for Miele appliances only, due to safety regulations. Price includes installation for Metro only.
\$1,699

Reasons to choose a Plinth Set

- Ideal for people who require:
 - Easier access to their laundry appliances
 - Additional storage space for laundry items
- The plinth height allows you to load and unload your laundry without having to bend over.
- For secure installation the appliances are fixed onto the plinths.
- Plinths are safely secured to each other for added stability and not drilled into the floor.

Miele

Miele Quality Means Forever Better



Thanks to our quality components and rigorous testing, you can enjoy the best possible product, for the longest time possible.

Dishwashers: 10-year quality assurance against the failure of door springs and anti-flooding guarantee for 20 years.



Riedel Exclusively Recommend Miele as their Dishwasher of Choice for Washing Delicate Stemware



Even high-quality delicate stemware can be washed in a Miele dishwasher without any risk. This is confirmed by Riedel – a manufacturer of wine glasses. Maximilian Riedel recommends Miele dishwashers for washing his glasses (hand-blown and machine-blown)...

“That our high-end glassware can be perfectly and gently washed in a Miele machine is nothing new to us. A Miele dishwasher makes it easy to care for your glasses perfectly. To ensure that our glasses are cleaned gently, we specifically recommend that they are washed in a Miele dishwasher. This produces better results than washing them by hand.”
– Maximilian Riedel



**During development phase of the displayed product series dishwasher G 5000 and G 7000, Miele has tested the functionality of core components in durability tests to simulate 20 years' average use within an average household. Individual products are likely to require servicing from time to time and may require replacement of core components to maintain them in a serviceable condition. For more information visit: Miele.com.au/quality or scan the QR code.

**20
YEARS**

German engineered and tested to the equivalent of 20 years' average usage.

Terms and Conditions apply. Visit miele.com.au/quality



Scan the QR code for more information

A World of Difference with Miele Dishwashers

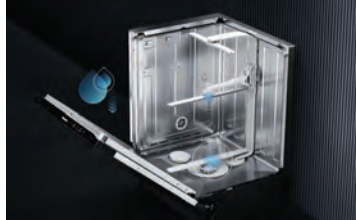
Available in a variety of configurations and load capacities, Miele dishwashers are made for total flexibility. Discover design and craftsmanship that makes caring for your dishes feel ever so indulgent.

Dishwasher DNA



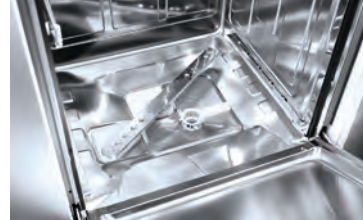
Stainless Steel Inner Cavity

Hygienic, durable and simple to clean.



EcoPower Technology

Economical and efficient for the life of the machine.



3-Stage Filtration

Highly effective filtration of food soiling.



Triple Spray Arms

For an efficient and thorough clean on all levels.



Miele Made Electronics

Quality, serviceability and peace of mind.



Miele Quality

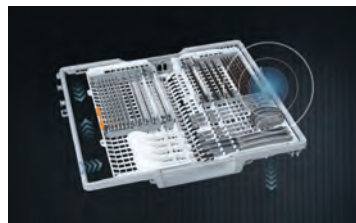
Miele dishwashers are tested to the equivalent of 20 years' average usage.**

G 5000 Highlights



QuickPowerWash

'A' grade wash performance for a full load in under 1 hour.



3D MultiFlex Tray¹

Safe storage for cutlery, large utensils and even small espresso cups.



AutoOpen Dry¹

Efficient and thorough drying of your crockery and plastic items.



Exclusively¹ recommended

by Riedel for washing their high quality stemware.



Unbeatable Efficiency

With our re-engineered water distribution system, all Miele G 5000 60 cm dishwashers feature a 6 Star WELS rating and either 4/4.5 Star Energy rating.

This ensures your running costs are kept low for the life of the machine, whilst also caring for the environment.

¹Available on G 52XX models only.

**During development phase of the displayed product series dishwasher G 5000 and G 7000, Miele has tested the functionality of core components in durability tests to simulate 20 years' average use within an average household. Individual products are likely to require servicing from time to time and may require replacement of core components to maintain them in a serviceable condition. For more information visit: Miele.com.au/quality or scan the QR code.



Scan the QR code for more information

G 7000 - The Worlds First Autonomous Dishwasher with Integrated PowerDisk

Discover excellent cleaning results with AutoDos: the world's first innovative automatic dispensing system with integrated PowerDisk – developed by Miele.

G 7000 Highlights



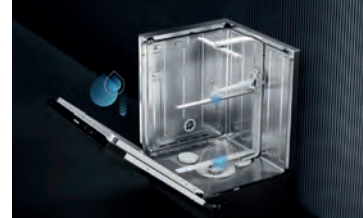
QuickPowerWash

Best cleaning and drying results for normally soiled dishes in under an hour with either PowerDisk or UltraTabs.



Miele@Mobile app

Programme in automatic start times based on your own schedule with AutoStart.



EcoPower Technology

New water distribution system.



FlexLine Baskets & 3D MultiFlex Tray

Unrivalled flexibility to store your dishes safely.



Energy & Water Ratings

Thanks to EcoPower Technology G 7000 dishwashers use significantly less energy and water.



Certified Hygiene

Miele dishwashers remove more than 99.9% of bacteria.[^]



AutoDos and PowerDisk¹

Automatic and accurate dispensing for every wash programme providing amazing wash results and savings in detergent costs.

We developed our dishwashers and our exclusive powder granulate as a precisely coordinated system. Depending on the selected programme, the powder granulate is automatically dispensed – exactly the right quantity at exactly the right time. Repeated dispensing within a programme is also possible. A sensor in the Automatic programme measures the degree of soiling and adapts the dosage accordingly.

One PowerDisk cartridge automatically dispenses for approximately 1 month (20 cycles / PowerDisk depending on programmes selected).

[^]Refers to the Enterococcus faecium or Micrococcus luteus bacteria in the hygiene programme with AutoDos and PowerDisk in the ECO 50°C and QuickPowerWash 65°C programmes. ¹Available from G 711x models. *6 month supply PowerDisk voucher redeemable at shop.miele.com.au

Dishwasher Specifications - G 5000 Freestanding

Highlight indicates a differentiation from previous model.

G 5000 BK BRWS



G 5000 BK CLST



G 5000 SC BRWS



G 5000 SC CLST



	\$1,449	\$1,549	\$1,549	\$1,649
Price				
Item Number	11587480	11587490	11587500	11587510
Colour	Brilliant White	CleanSteel	Brilliant White	CleanSteel
Cutlery Tray (SC)	-	-	Fixed Cutlery Tray	Fixed Cutlery Tray
Cutlery Basket (BK)	YES	YES	-	-
Wash Programmes	5	5	5	5
Wash Extras/Options	3	3	3	3
Place Settings	14	14	14	14
Operational Noise	46 (dB)	46 (dB)	46 (dB)	46 (dB)
Display Type	7-segment Yellow display	7-segment Yellow display	7-segment Yellow display	7-segment Yellow display
Basket Design	Comfort Baskets	Comfort Baskets	Comfort Baskets	Comfort Baskets
Triple Spray Arms	YES	YES	YES	YES
Professional Circulation Pump	YES	YES	YES	YES
QuickPowerWash	YES	YES	YES	YES
EcoPower Technology	YES	YES	YES	YES
Brilliant GlassCare	-	-	-	-
AutoOpen Drying	-	-	-	-
Energy & WELS ratings				
Energy star rating	4	4	4	4
WELS star rating	6	6	6	6
WELS registration number	D02483	D02483	D02487	D02487
Water consumption in l / wash	9.2	9.2	9.2	9.2
Test programme used	Eco Programme	Eco Programme	Eco Programme	Eco Programme

Dishwasher Specifications - G 5000 Freestanding

Highlight indicates a differentiation from previous model.

G 5210 BK BRWS



G 5210 BK CLST



G 5210 SC CLST



	G 5210 BK BRWS	G 5210 BK CLST	G 5210 SC CLST
Price	\$1,799	\$1,899	\$1,999
Item Number	11587570	11587580	11587590
Colour	Brilliant White	CleanSteel	CleanSteel
Cutlery Tray (SC)	-	-	3D MultiFlex Tray
Cutlery Basket (BK)	YES	YES	-
Wash Programmes	5	5	5
Wash Extras/Options	3	3	3
Place Settings	14	14	14
Operational Noise	45 (dB)	45 (dB)	45 (dB)
Display Type	7-segment Yellow display	7-segment Yellow display	7-segment Yellow display
Basket Design	Comfort Baskets	Comfort Baskets	Comfort Baskets
Triple Spray Arms	YES	YES	YES
Professional Circulation Pump	YES	YES	YES
QuickPowerWash	YES	YES	YES
EcoPower Technology	YES	YES	YES
Brilliant GlassCare	YES	YES	YES
AutoOpen Drying	YES	YES	YES
Energy & WELS ratings			
Energy star rating	4.5	4.5	4.5
WELS star rating	6	6	6
WELS registration number	D02495	D02495	D02491
Water consumption in l / wash	9.2	9.2	9.2
Test programme used	Eco Programme	Eco Programme	Eco Programme

Dishwasher Specifications - G 5000 Built-Under

Highlight indicates a differentiation from previous model.

G 5000 SCU BRWS



G 5000 SCU CLST



G 5210 BKU CLST



G 5210 SCU CLST



	G 5000 SCU BRWS	G 5000 SCU CLST	G 5210 BKU CLST	G 5210 SCU CLST
Price	\$1,649	\$1,749	\$2,049	\$2,149
Item Number	11587520	11587530	11587600	11587610
Colour	Brilliant White	CleanSteel	CleanSteel	CleanSteel
Cutlery Tray (SC)	Fixed Cutlery Tray	Fixed Cutlery Tray	-	3D MultiFlex Tray
Cutlery Basket (BK)	-	-	YES	-
Wash Programmes	5	5	5	5
Wash Extras/Options	3	3	3	3
Place Settings	14	14	14	14
Operational Noise	46 (dB)	46 (dB)	45 (dB)	45 (dB)
Display Type	7-segment Yellow display	7-segment Yellow display	7-segment Yellow display	7-segment Yellow display
Basket Design	Comfort Baskets	Comfort Baskets	Comfort Baskets	Comfort Baskets
Triple Spray Arms	YES	YES	YES	YES
Professional Circulation Pump	YES	YES	YES	YES
QuickPowerWash	YES	YES	YES	YES
EcoPower Technology	YES	YES	YES	YES
Brilliant GlassCare	-	-	YES	YES
AutoOpen Drying	-	-	YES	YES
Energy & WELS ratings				
Energy star rating	4	4	4.5	4.5
WELS star rating	6	6	6	6
WELS registration number	D02488	D02488	D02496	D02492
Water consumption in l / wash	9.2	9.2	9.2	9.2
Test programme used	Eco Programme	Eco Programme	Eco Programme	Eco Programme

Dishwasher Specifications - G 5000 Integrated

Highlight indicates a differentiation from previous model.



	G 5000 BKi CLST	G 5000 SCi CLST	G 5210 BKi CLST	G 5210 SCi CLST	G 5430 SCi BRWS (45 cm model)
Price	\$1,649	\$1,749	\$2,049	\$2,149	\$1,749
Item Number	11587540	11587550	11587620	11587630	11587650
Colour	CleanSteel fascia	CleanSteel fascia	CleanSteel fascia	CleanSteel fascia	Brilliant White fascia
Cutlery Tray (SC)	-	Fixed Cutlery Tray	-	3D MultiFlex Tray	Fixed Cutlery Tray
Cutlery Basket (BK)	YES	-	YES	-	-
Wash Programmes	5	5	5	5	5
Wash Extras/Options	3	3	3	3	3
Place Settings	14	14	14	14	10
Operational Noise	46 (dB)	46 (dB)	45 (dB)	45 (dB)	46 (dB)
Display Type	7-segment Yellow display	7-segment Yellow display	7-segment Yellow display	7-segment Yellow display	7-segment Yellow display
Basket Design	Comfort Baskets	Comfort Baskets	Comfort Baskets	Comfort Baskets	Comfort Baskets
Triple Spray Arms	YES	YES	YES	YES	YES
Professional Circulation Pump	YES	YES	YES	YES	YES
QuickPowerWash	YES	YES	YES	YES	YES
EcoPower Technology	YES	YES	YES	YES	YES
Brilliant GlassCare	-	-	YES	YES	-
AutoOpen Drying	-	-	YES	YES	-
Energy & WELS ratings					
Energy star rating	4	4	4.5	4.5	3.5
WELS star rating	6	6	6	6	4.5
WELS registration number	D02484	D02489	D02497	D02493	D02485
Water consumption in l / wash	9.2	9.2	9.2	9.2	9.0
Test programme used	Eco Programme	Eco Programme	Eco Programme	Eco Programme	Eco Programme

Dishwasher Specifications - G 5000 Fully Integrated

Highlight indicates a differentiation from previous model.

G 5053 SCVi BK



G 5263 SCVi BK



**G 5481 SCVi
(45 cm model)**



Price	\$2,149	\$2,499	\$1,999
Item Number	11587560	11587640	11587660
Colour	-	-	-
Cutlery Tray (SC)	Fixed Cutlery Tray	3D MultiFlex Tray	Fixed Cutlery Tray
Cutlery Basket (BK)	YES	YES	-
Wash Programmes	5	5	5
Wash Extras/Options	3	3	3
Place Settings	14	14	10
Operational Noise	46 (dB)	45 (dB)	46 (dB)
Display Type	7-segment Yellow display	7-segment Yellow display	7-segment Yellow display
Basket Design	Comfort Baskets	Comfort Baskets	Comfort Baskets
Triple Spray Arms	YES	YES	YES
Professional Circulation Pump	YES	YES	YES
QuickPowerWash	YES	YES	YES
EcoPower Technology	YES	YES	YES
Brilliant GlassCare	-	YES	-
AutoOpen Drying	-	YES	-
Energy & WELS ratings			
Energy star rating	4	4.5	3.5
WELS star rating	6	6	4.5
WELS registration number	D02490	D02494	D02486
Water consumption in l / wash	9.2	9.2	9.0
Test programme used	Eco Programme	Eco Programme	Eco Programme

Dishwasher Specifications - G 7000 Freestanding

Highlight indicates a differentiation from previous model.

G 7114 SC BRWS



G 7114 SC CLST



Price	\$2,499	\$2,599
Item Number	11870600	11870610
Display type	1-line text display	1-line text display
Colour	Brilliant White (BRWS)	CleanSteel (CLST)
Place Settings	14	14
Basket Design	ComfortPlus basket	ComfortPlus basket
Cutlery Tray (SC)	3D Multiflex Tray	3D Multiflex Tray
Wash Programmes	8	8
Automatic dispensing with integrated PowerDisk	YES	YES
AutoStart Function	YES	YES
Delay Start	YES	YES
EcoFeedback	YES	YES
AutoOpen Drying	YES	YES
AutoClose	-	-
Brilliant LED Light	-	-
Knock2Open (K2O)	-	-
Operation Noise	44 dB(A) re 1 pW	44 dB(A) re 1 pW
Wash Extras/Options: Express / Extra Clean / ExtraDry / Intense Zone	YES / YES / YES / -	YES / YES / YES / -
MultiLingua	YES	YES
Professional Circulation Pump	YES	YES
Triple spray arms / Alternating action	YES / YES	YES / YES
QuickPowerWash	YES	YES
Brilliant GlassCare	YES	YES
EcoPower Technology	YES	YES
Energy star rating	4.5	4.5
WELS star rating	6	6
WELS registration number	D02548	D02548
Water consumption in l / wash	9.2	9.2
Test programme used	ECO Programme	ECO Programme
WiFi Conn@ct	YES	YES
1 month supply of UltraTabs All in 1 ³	-	-
1 month supply of PowerDisk ⁴	YES	YES
6 months' supply of PowerDisk ⁵	YES	YES

Dishwasher Specifications - G 7000 Built-Under

Highlight indicates a differentiation from previous model.

G 7114 SCU CLST



G 7314 SCU CLST



G 7319 SCU XXL CLST



Price	\$2,799	\$2,999	\$3,249
Item Number	11870630	11321090	11321110
Display type	1-line text display	1-line text display	1-line text display
Colour	CleanSteel (CLST)	CleanSteel (CLST) with Obsidian Black Fascia	CleanSteel (CLST) with Obsidian Black Fascia
Place Settings	14	14	15
Basket Design	ComfortPlus basket	Extra Comfort basket	Extra Comfort basket
Cutlery Tray (SC)	3D Multiflex Tray	3D Multiflex Tray	3D Multiflex Tray
Wash Programmes	8	10	10
Automatic dispensing with integrated PowerDisk	YES	YES	YES
AutoStart Function	YES	YES	YES
Delay Start	YES	YES	YES
EcoFeedback	YES	YES	YES
AutoOpen Drying	YES	YES	YES
AutoClose	-	-	-
Brilliant LED Light	-	-	-
Knock2Open (K2O)	-	-	-
Operation Noise	44 dB(A) re 1 pW	43 dB(A) re 1 pW	43 dB(A) re 1 pW
Wash Extras/Options: Express / Extra Clean / ExtraDry / Intense Zone	YES / YES / YES / -	YES / YES / YES / YES	YES / YES / YES / YES
MultiLingua	YES	YES	YES
Professional Circulation Pump	YES	YES	YES
Triple spray arms / Alternating action	YES / YES	YES / YES	YES / YES
QuickPowerWash	YES	YES	YES
Brilliant GlassCare	YES	YES	YES
EcoPower Technology	YES	YES	YES
Energy star rating	4.5	4.5	4.5
WELS star rating	6	6	6
WELS registration number	D02549	D02373	D02374
Water consumption in l / wash	9.2	9.2	9.6
Test programme used	ECO Programme	ECO Programme	ECO Programme
WiFi Conn@ct	YES	YES	YES
1 month supply of UltraTabs All in 1 ³	-	-	-
1 month supply of PowerDisk ⁴	YES	YES	YES
6 months' supply of PowerDisk ⁵	YES	YES	YES

Dishwasher Specifications - G 7000 Integrated

Highlight indicates a differentiation from previous model.

G 7114 SCi CLST



G 7319 SCi XXL CLST



G 7519 SCi XXL OBSW



G 7919 SCi XXL OBSW



Price	\$2,799	\$3,299	\$3,799	\$4,999
Item Number	11870640	11321130	11321200	11321250
Display type	1-line text display	1-line text display	1-line text display	M Touch
Colour	CleanSteel fascia (CLST)	CleanSteel (CLST) with Obsidian Black Fascia	Obsidian Black Fascia	Obsidian Black Fascia
Place Settings	14	15	15	15
Basket Design	ComfortPlus basket	Extra Comfort basket	Maxi Comfort basket	Maxi Comfort basket
Cutlery Tray (SC)	3D Multiflex Tray	3D Multiflex Tray	3D Multiflex Tray	3D Multiflex Tray
Wash programmes	8	10	13	13
Automatic dispensing with integrated PowerDisk	YES	YES	YES	YES
AutoStart Function	YES	YES	YES	YES
Delay Start	YES	YES	YES	YES
EcoFeedback	YES	YES	YES	YES
AutoOpen Drying	YES	YES	YES	YES
AutoClose	-	-	YES (Vi model only)	YES (all models)
Brilliant LED Light	-	-	YES	YES
Knock2Open (K2O)	-	-	YES (Vi model only)	YES (Vi model only)
Operation Noise	44 dB(A) re 1 pW	43 dB(A) re 1 pW	42 dB(A) re 1 pW	42 dB(A) re 1 pW
Wash Extras/Options: Express / Extra Clean / ExtraDry / Intense Zone	YES / YES / YES / -	YES / YES / YES / YES	YES / YES / YES / YES	YES / YES / YES / YES
MultiLingua	YES	YES	YES	YES
Professional Circulation Pump	YES	YES	YES	YES
Triple spray arms / Alternating action	YES / YES	YES / YES	YES / YES	YES / YES
QuickPowerWash	YES	YES	YES	YES
Brilliant GlassCare	YES	YES	YES	YES
EcoPower Technology	YES	YES	YES	YES
Energy star rating	4.5	4.5	4.5	4.5
WELS star rating	6	6	6	6
WELS registration number	D02550	D02375	D02377	D02379
Water consumption in l / wash	9.2	9.6	9.6	9.6
Test programme used	ECO Programme	ECO Programme	ECO Programme	ECO Programme
WiFi Conn@ct	YES	YES	YES	YES
1 month supply of UltraTabs All in 1 ³	-	-	-	-
1 month supply of PowerDisk ⁴	YES	YES	YES	YES
6 months' supply of PowerDisk ⁵	YES	YES	YES	YES

Dishwasher Specifications - G 7000 Fully Integrated

Highlight indicates a differentiation from previous model.



	G 7164 SCVi	G 7169 SCVi XXL	G 7369 SCVi XXL	G 7599 SCVi XXL K2O	G 7969 SCVi XXL K2O
Price	\$2,999	\$3,199	\$3,799	\$4,699	\$5,199
Item Number	11870660	11927230	11321190	11321230	11321260
Display type	1-line text display	1-line text display	1-line text display	1-line text display	M Touch Vi
Colour	CleanSteel (CLST)	CleanSteel (CLST)	Obsidian Black Fascia	Obsidian Black Fascia	Obsidian Black Fascia
Place Settings	14	15	15	15	15
Basket Design	ComfortPlus basket	ComfortPlus basket	Extra Comfort basket	Maxi Comfort basket	Maxi Comfort basket
Cutlery Tray (SC)	3D Multiflex Tray	3D Multiflex Tray	3D Multiflex Tray	3D Multiflex Tray	3D Multiflex Tray
Wash Programmes	8	8	10	13	13
Automatic dispensing with integrated PowerDisk	YES	YES	YES	YES	YES
AutoStart Function	YES	YES	YES	YES	YES
Delay Start	YES	YES	YES	YES	YES
EcoFeedback	YES	YES	YES	YES	YES
AutoOpen Drying	YES	YES	YES	YES	YES
AutoClose	-	-	-	YES (Vi model only)	YES (all models)
Brilliant LED Light	-	-	-	YES	YES
Knock2Open (K2O)	-	-	-	YES (Vi model only)	YES (Vi model only)
Operation Noise	44 dB(A) re 1 pW	44 dB(A) re 1 pW	43 dB(A) re 1 pW	42 dB(A) re 1 pW	42 dB(A) re 1 pW
Wash Extras/Options: Express / Extra Clean / ExtraDry / Intense Zone	YES / YES / YES / -	YES / YES / YES / -	YES / YES / YES / YES	YES / YES / YES / YES	YES / YES / YES / YES
MultiLingua	YES	YES	YES	YES	YES
Professional Circulation Pump	YES	YES	YES	YES	YES
Triple spray arms / Alternating action	YES / YES	YES / YES	YES / YES	YES / YES	YES / YES
QuickPowerWash	YES	YES	YES	YES	YES
Brilliant GlassCare	YES	YES	YES	YES	YES
EcoPower Technology	YES	YES	YES	YES	YES
Energy star rating	4.5	4.5	4.5	4.5	4.5
WELS star rating	6	6	6	6	6
WELS registration number	D02551	D02553	D02376	D02378	D02380
Water consumption in l / wash	9.2	9.6	9.6	9.6	9.6
Test programme used	ECO Programme	ECO Programme	ECO Programme	ECO Programme	ECO Programme
WiFi Conn@ct	YES	YES	YES	YES	YES
1 month supply of UltraTabs All in 1³	-	-	-	-	-
1 month supply of PowerDisk⁴	YES	YES	YES	YES	YES
6 months¹ supply of PowerDisk⁵	YES	YES	YES	YES	YES

Dishwasher Accessories

Suitable for G 5000 and G 7000 dishwashers



GFV 45/60-1 07160830
45 cm wide CleanSteel door panel, suits all 45 cm wide integrated models.
\$370



GFV 45/60-7 11526930
45 cm wide Brilliant White door panel, suits all 45 cm wide semi-integrated models.
\$370



GFV 60/57-7 ▲ 10986710
60 cm wide CleanSteel door panel, suits all 60 cm wide semi-integrated models with Obsidian Black and CleanSteel fascia panels.
\$370



GFV 60/60-7 10986720
60 cm wide CleanSteel door panel, suits all 60 cm wide semi-integrated models with CleanSteel fascia panels.
\$370



GFVi 453/72-7 11526970
CleanSteel door panel, not pre-drilled, supplied without handle (for use with custom handles), suits all 45 cm wide G 5000, fully integrated models.
\$455



GFVi 701/72 10986740
60 cm wide CleanSteel door panel, not pre-drilled, supplied without handle (for use with custom handles), suits all 60 cm wide fully integrated models.
\$455



GFVi 702/72 10986760
60 cm wide CleanSteel door panel, with H 7000 PureLine oven handle, suits all 60 cm wide fully integrated models.
\$455



GBU 5000 9614020
Cutlery basket to fit all G 7000 and G 5000 models.
\$105



UBS G 60-1 06390810
60 cm wide built-under kit, suits all G 5000 60 cm wide freestanding models. Not suitable for G 7000 models.
\$105



Miele Australia Pty. Ltd.
ACN 005 635 398
ABN 96 005 635 398

Head Office

PO Box 4084
Auburn South VIC 3122
Telephone:
1300 4 MIELE (1300 464 353)
www.miele.com.au

**Miele Experience Centre
Doncaster**

Shop 1136/7, Westfield
Doncaster
619 Doncaster Road
VIC 3108

**Miele Experience Centre
South Melbourne**

206-210 Coventry Street
South Melbourne VIC 3205

Miele Partner Centre

509 Nepean Highway
Brighton VIC 3186

**Miele Experience Centre
Sydney**

298 Victoria Avenue
Chatswood NSW 2067

**Miele Experience Centre
Bondi**

Shop 5001
Westfield Bondi Junction
500 Oxford St
Bondi Junction NSW 2022

Miele Experience Centre

Lower Ground Food Hall
David Jones Elizabeth St. Store
86-108 Castlereagh Street
Sydney NSW 2000

Miele Partner Centre

90-98 Victoria Rd
Drummoyne NSW 2047

**Miele Experience Centre
Brisbane**

63 Skyring Terrace
Newstead QLD 4006

**Miele Experience Centre
Gold Coast**

Brickworks Centre
131 Ferry Road
Southport QLD 4215

**Miele Experience Centre
and Office Perth**

205-207 Stirling Highway
Claremont WA 6010

**Miele Experience Centre
Karrinyup**

Shop SP1236, Level One,
Karrinyup Shopping Centre,
200 Karrinyup Rd,
Karrinyup WA 6018

**Miele Experience Centre
and Office Adelaide**

83-85 Sir Donald Bradman Drive
Hilton SA 5033

Miele Partner Centre

620 Cross Rd
Plympton Park SA 5038

Trading Conditions: Sales transactions are made between Miele Australia Pty. Ltd. and the end consumer.

Terms and Conditions of sale are outlined on the official GST tax invoice.

The Miele Chartered Agent acts on behalf of Miele Australia Pty. Ltd.

For further information about our products and services please visit our website: www.miele.com.au

This price list is valid throughout Australia as from 1 October 2023.

All prices quoted are in Australian Dollars, inclusive of GST. Product availability and prices are subject to change without prior notice.

